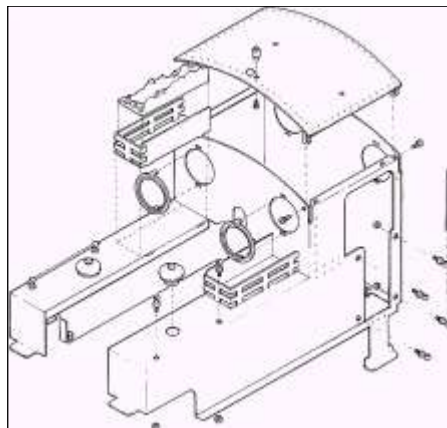




Modular Locomotive System

Instruction Manual for **HBK6** Lady Anne Body Kit



Version 3

Roundhouse Engineering Co. Ltd.
Unit 6-9 Churchill Business Park
Churchill Road. Wheatley
Doncaster. DN1 2TF. England

Tel. 01302 328035 Fax. 01302 761312
Email: support@roundhouse-eng.com

The logo for Roundhouse Online, featuring the word "ROUNDHOUSE" in a stylized font above the word "ONLINE".

www.roundhouse-eng.com



HBK6 Lady Anne Body Kit

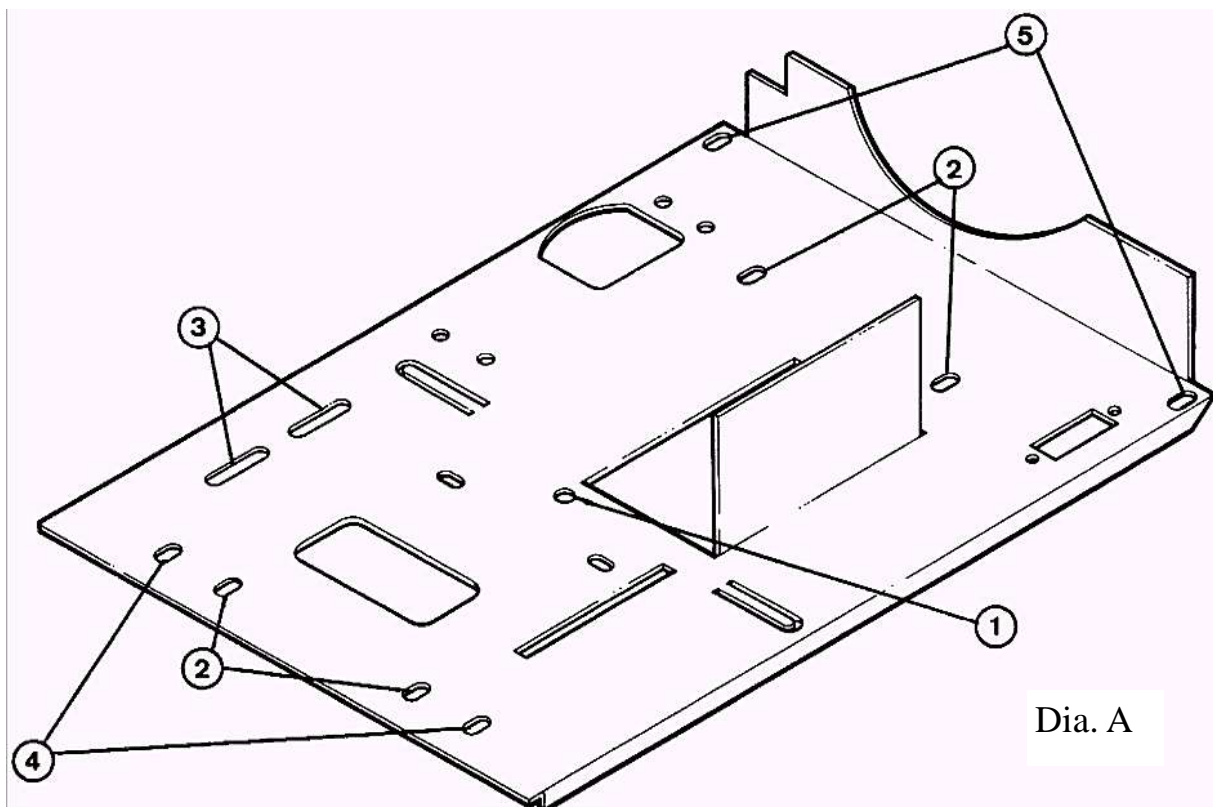
Introduction

These instructions cover the construction of HBK6 side tank body. The brass panels are photo etched to shape and all fold lines and holes are etched into the parts where necessary. Only a minimum amount of cleaning up is required and will normally simply mean running round the edges with a fine file or emery cloth. As a general rule, all etched fold lines are on the inside of panels except where stated otherwise. The panels have been designed for assembly with soft solder and a small butane blow-lamp with fine nozzle is recommended. Glue, of any kind, is not suitable.

Refer to diagrams where necessary and hold parts together with small clamps, e.g. toolmakers clamps, during soldering of joints.

All painting is left to the builder and there is a good choice of cellulose or enamel spray paints readily available though a suitable primer must be used. All brasswork must be well rubbed down with wet and dry paper and thoroughly cleaned before any paint is applied.

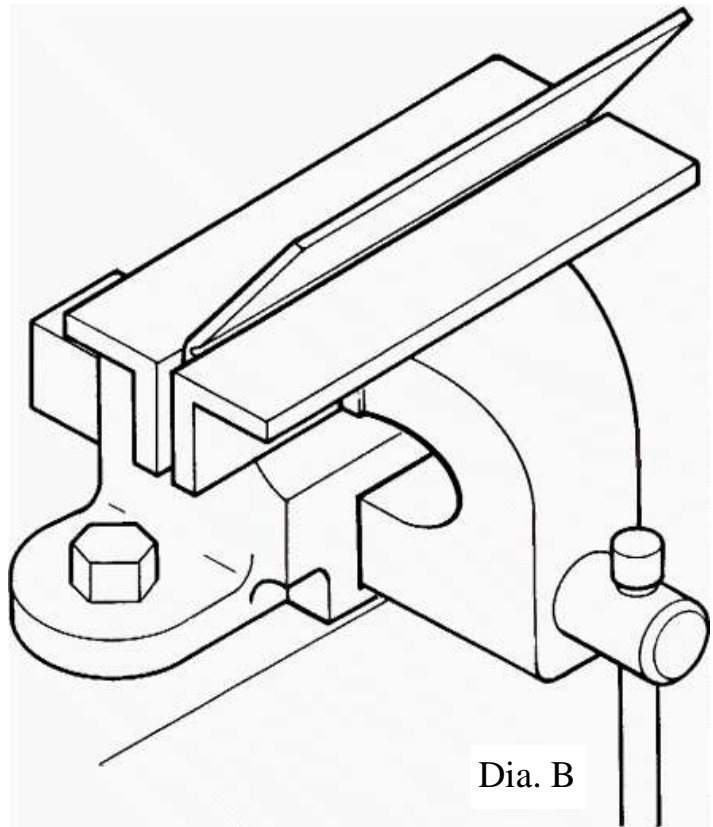
Some model suppliers stock more specialised paints, which include etch primers that work especially well with brass and should be used if available.



Construction

Fold up the cab floor/footplate as shown in the diagram (Dia. A).

When folding long sections, i.e. the side flanges, it is better to hold the flanges between two pieces of angle iron in a vice or clamps, as illustrated (Dia. B). In this way, all the flange is bent over in one go and the result is a much neater job.



The floor can now be painted then fitted to the chassis as follows.

If the chassis/boiler unit is complete, it is necessary to remove the lubricator, gas burner and gas tank and the 6BA screw fixing the rear boiler mounting foot to the frame spacer.

Pull the boiler backwards about 20mm out of the smoke box then lift the rear end and slide the foot plate in place.

Reposition the boiler and fasten again with the 6BA screw through its mounting foot, this time also passing through the hole (1 Dia. A) in the foot plate. Do not tighten at this time.

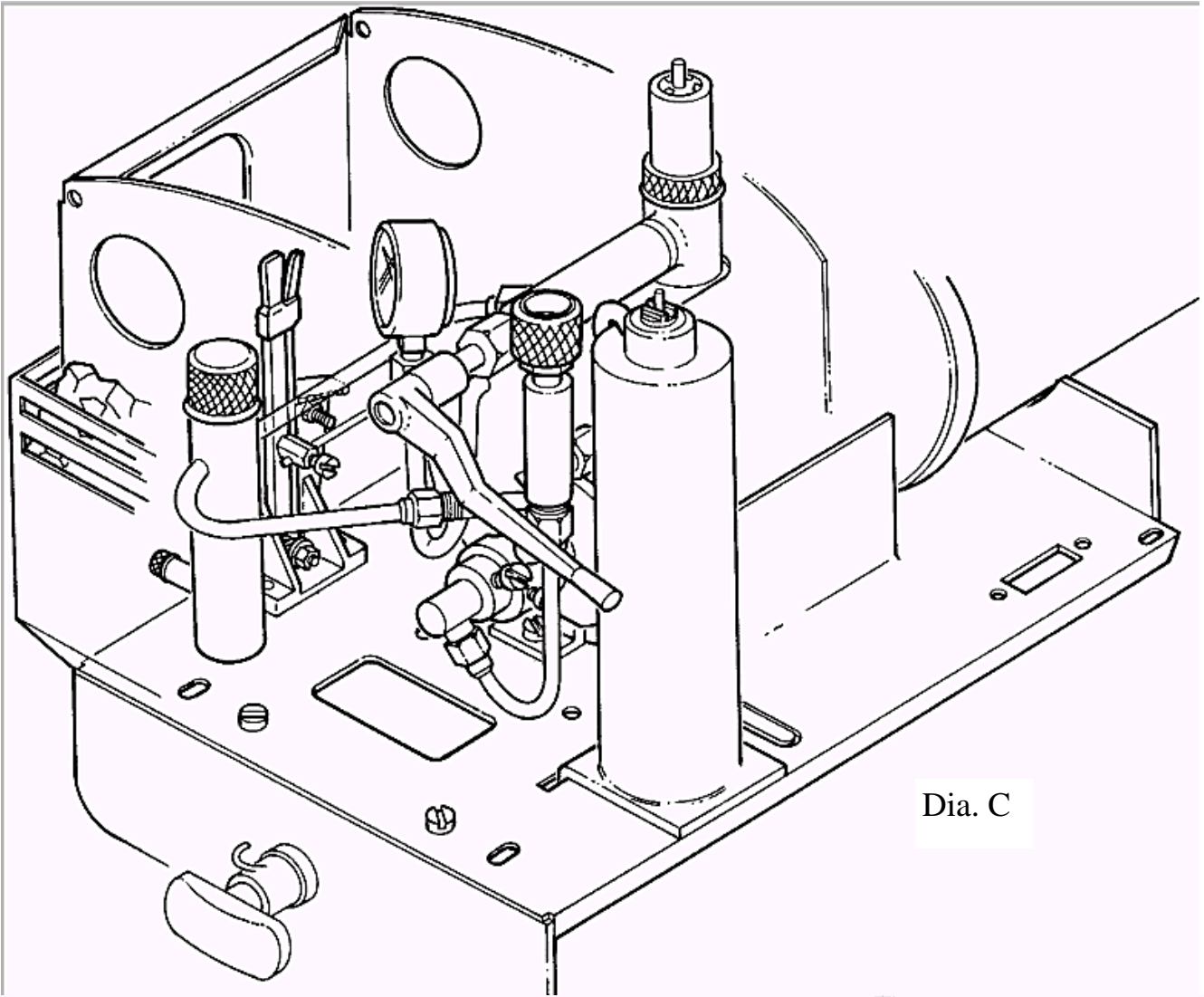
Screw the four 6BA x 1/4" foot plate mounting screws loosely into the frame spacers through the holes (2) marked in the diagram.

The mounting holes are slotted to allow the foot plate to be squared up to the buffer beam before finally tightening all five screws.

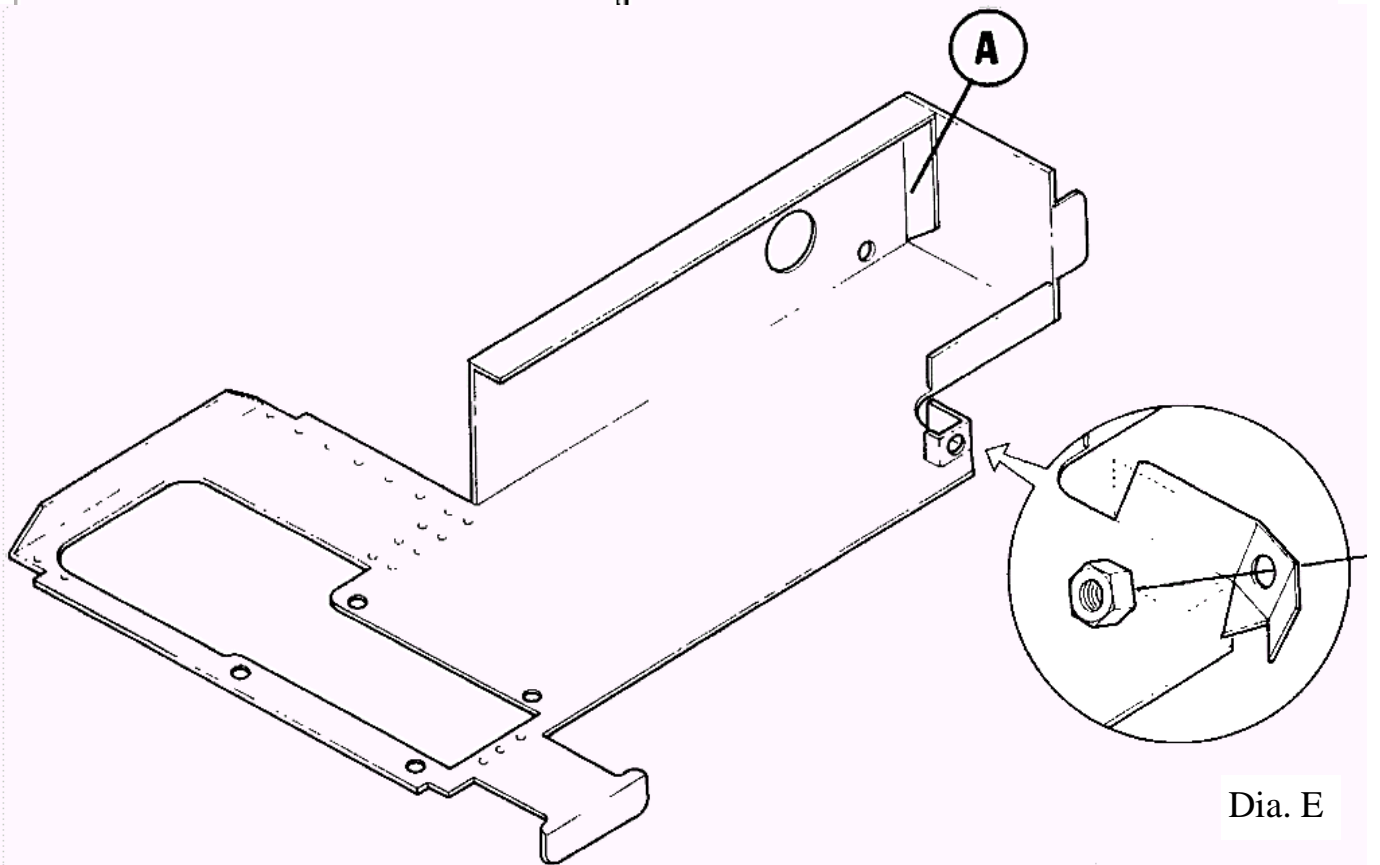
Replace the gas equipment and lubricator as before. Note that there is a slot in the foot plate for the gas tank mounting to pass through.

Two slots (3) are provided on the left hand side of the foot plate for mounting the manual reversing lever.

Diagram C shows the basic layout of controls and fittings on a manual control engine. Radio control versions differ slightly but this is covered in detail in the HBK10 (*Lady Anne R/C Fittings Only Kit*) instruction manual.



Dia. C



Dia. E

Fold up left and right hand body sides as shown in dia. E, ensuring that all folds are at 90 degrees. Clamp together tab A and the tank front and solder the two together making sure that the tank top is at 90 degrees to the tank side.

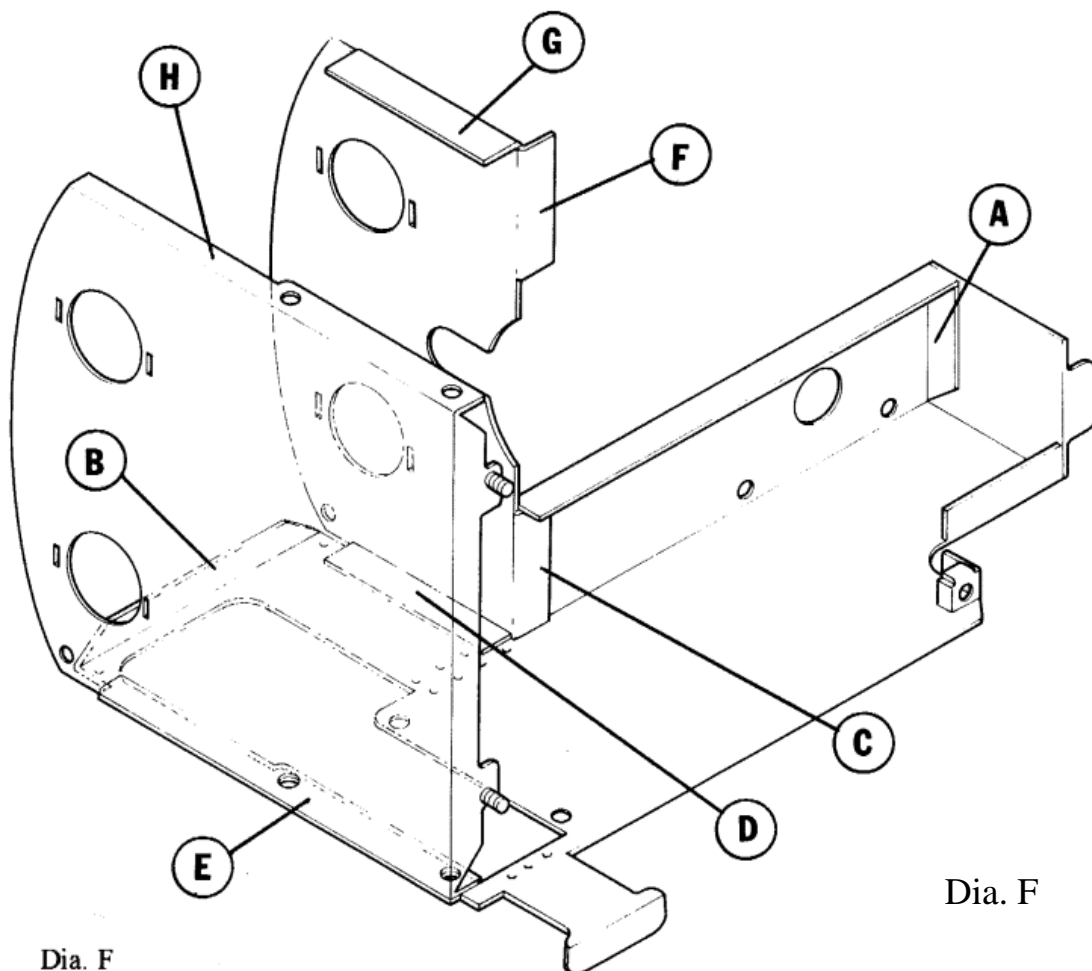
The front body mounting is formed by folding up the series of small tabs as shown in the insert diagram and soldering a 6BA nut into the pocket thus formed. At a later stage, this sits down onto the footplate and a screw passes up into the nut and holds the front of the body in place. Fold up the cab front and back as shown in dia. F.

Note that all three flanges bend the same way on the back panel, i.e. facing into the cab interior however, only the side flanges on the front panel face into the cab. The two that attach to the tank tops are bent to face the opposite way and sit up under the tank tops.

Clamp tab D on the cab front to one of the side panels ensuring that the front face is parallel to the front edge of the cab and that tab C is right up under the tank top. Place a second clamp to hold tab C to the underside of the tank top and check that all joints are held squarely before soldering. Now repeat the same procedure for the other side, tabs F and G. On the left-hand side, a slot is left at the top corner of the cab for the roof hinge.

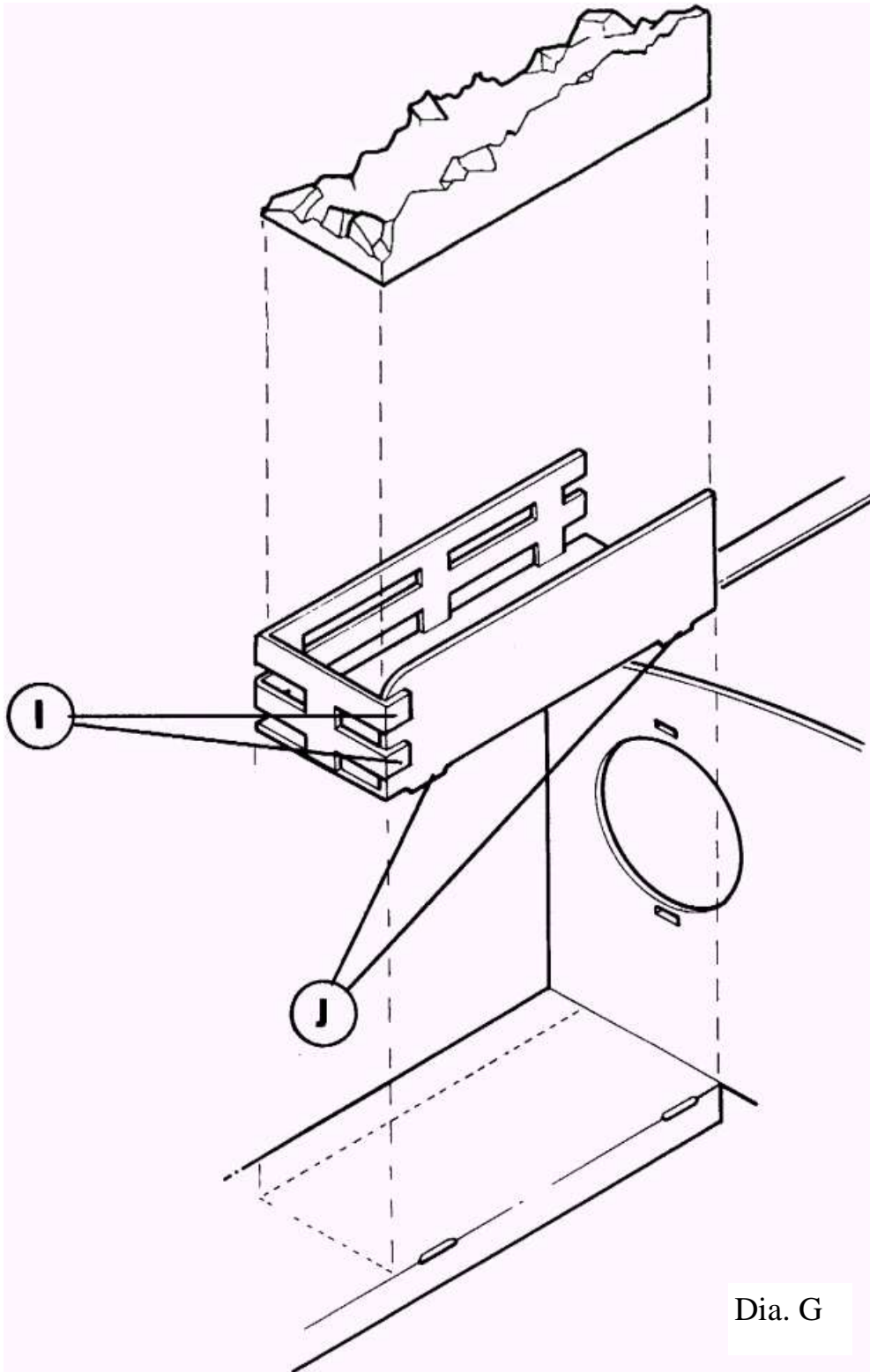
Before attaching the cab back, solder the two 6BA brass screws into the holes on the bottom flange. These are the rear body mounts when it is attached to the footplate.

Clamp tab E on the cab back to the cab side ensuring that the handrail holes line up and the back face is parallel to the back edge of the cab before soldering. Repeat for tab H. As with the front panel, a slot is formed in the top corner for the roof hinge.



If fitting the optional front coal bunkers, these should now be bent up as shown in dia.G and tabs I soldered, though you have a choice of how to fix them to the body. Because they are not structural items they can, if you wish, be treated as separate parts and glued on after painting. For a more permanent job however, they can now be soldered on but care must be taken not to disturb the cab seams already soldered. A clamp holding both the coal bunker and the tank top/cab front seam (tabs C and F) all together will assist. To locate correctly, there are two small tabs (J) which sit in the corresponding slots on the inside edge of the tank top.

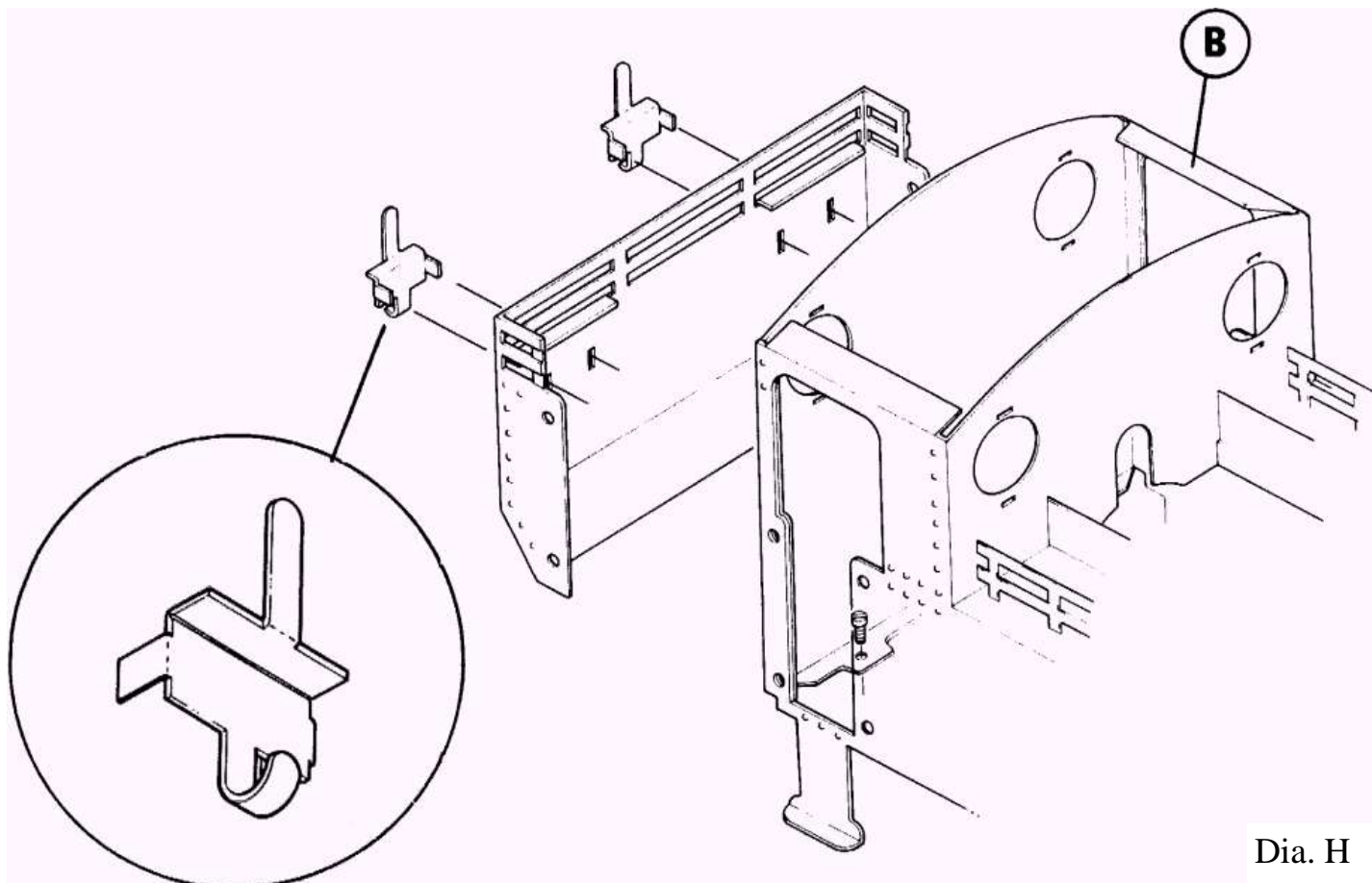
Do not fit the dummy coal load at this time



Dia. G

If fitting the optional rear bunker, this should now be folded up as shown in dia. H.

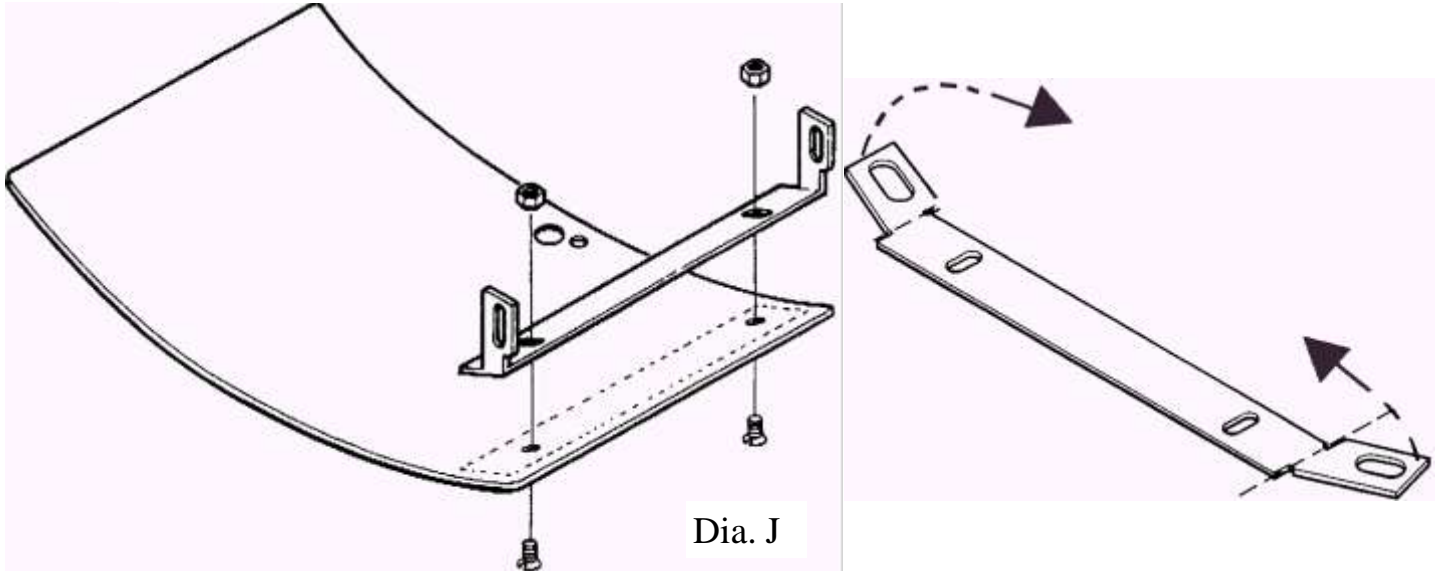
Fold the lamp brackets as shown in the inset diagram and push the side tabs through the slots provided in the bunker rear. These can then be bent over on the inside before soldering. The completed bunker should not be fitted to the body at this time.



Note: The lower etched line on the outer side of both side tanks should not be folded. This line is purely decorative. See the diagram below.

Do Not Fold This Etched Line.

Fold the cab roof hinge as shown in dia. J and attach it to the underside of the cab roof using two 8BA countersunk screws and nuts. The hinge has slotted holes to allow for adjustment of the roof position. All excess thread and a small amount of the nut should be filed away after tightening so that they do not interfere with flange B on the cab side.



All assemblies can now be prepared and painted as outlined in the introduction. The three dummy coal loads should be checked for fit and filed to size - this should be done in a well ventilated area, preferably outside, as some dust is produced when filing. The rear one is held in place between the bunker and the cab back and should be a snug fit between the two. The coals can be painted black.

When painted items are thoroughly dry, all handrails can be fitted using 8BA nuts and the dummy whistle screwed to the cab roof with an 8BA screw. If fitting the rear bunker, this is held in place by the rear cab door handrails, not forgetting the dummy coal load.

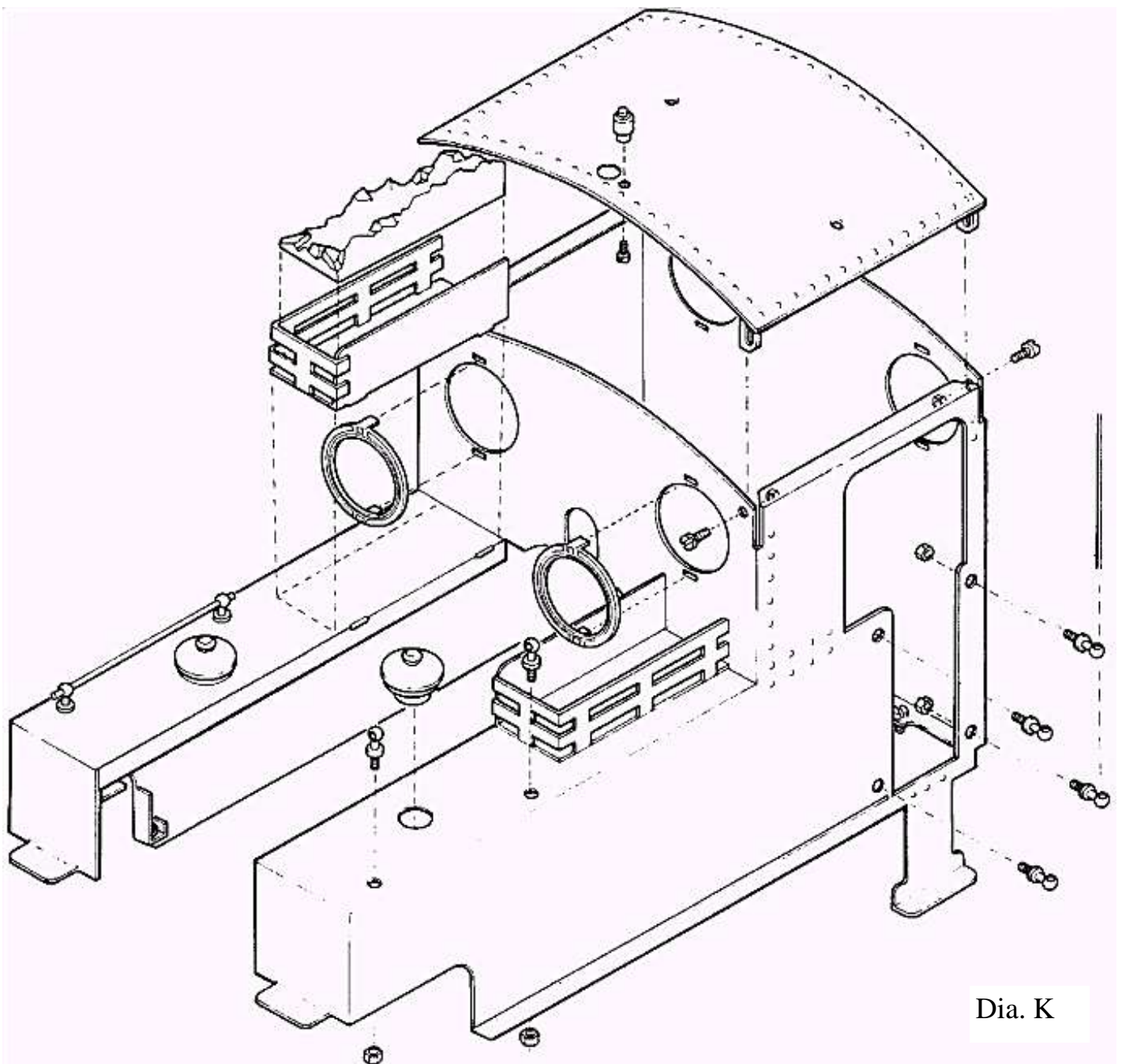
The front dummy coal loads can be glued in place, as can the dummy tank fillers.

The spectacle rims are held in place by tabs which pass through the slots above and below the spectacles. Note that the top tab on each rim should be bent down inside the cab and the bottom ones bent up.

Finally, the cab roof is attached by an 8BA screw and nut at each side through the slotted holes in the hinge. These screws both pass through from the outside with the nuts on the inside and should be left slightly loose to allow the hinge to operate. A spot of 'Loctite' or, if this is not available, paint, on the threads will prevent the nut from coming off.

The finished body is fastened down to the foot plate by two 6BA nuts under the rear, just in front of the buffer beam and two 6BA screws under the front corners of the side tanks.

Finally, the polished brass dome sits over the boiler filler plug.
Please note that if you have an earlier boiler without the large filler plug on top, you should contact the Roundhouse factory regarding the fitting of the dome.



Dia. K

HBK6 Lady Anne Body Kit Checklist

Loose items:-

Cab Floor
Cab Front
Cab Back
Bunker
Cab Roof
Boiler Band
Right and Left cab/side tank
Polished brass dome

Sealed Pack No.1

Dummy Coal Set (3 Pieces)
Lamp Brackets x 2
Cab Roof Hinge
Right and Left Coal Rails
Dummy Whistle
Spectacle Rims x 4
Dummy Tank Fillers x 2
Handrail set (6 pieces)

Sealed Pack No.2

12 of Handrail Knobs
15 of 8BA Nuts
4 of 6BA Nuts
3 of 8BA x 3/16" Screws
8 of 6BA x 1/4" Screws
1 of 8BA long screw (for boiler band)
2 of 8BA x 3/16" Countersunk Screws

Checked